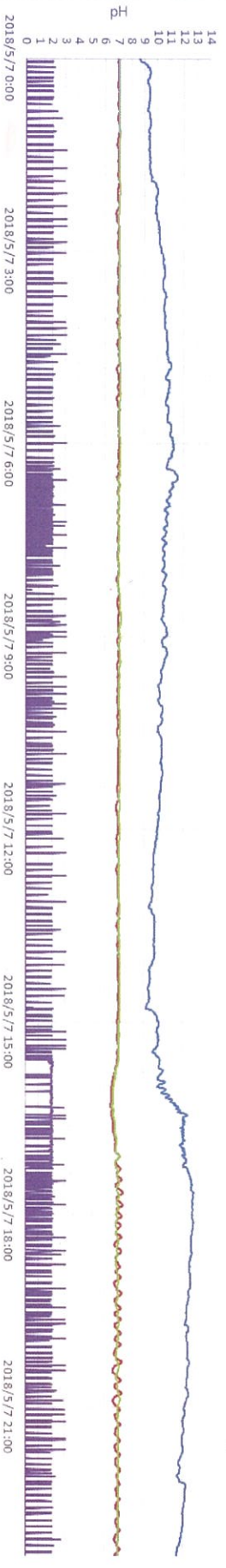


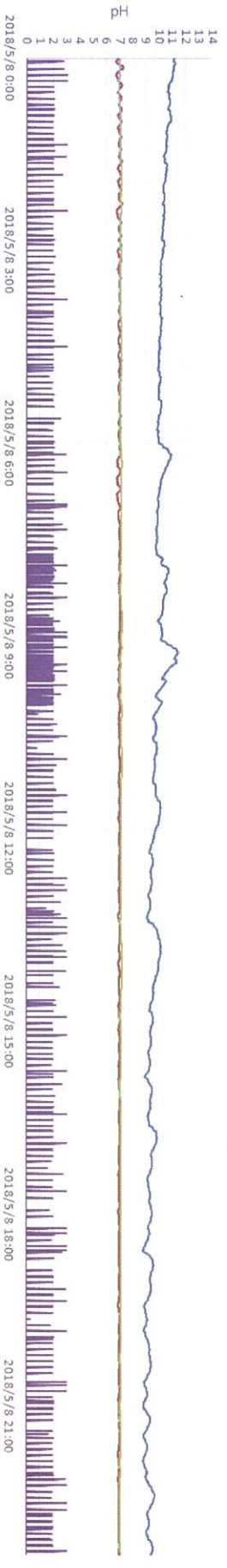
某建設現場(大阪市内) pHサイクロウ 試験後 実施導入現場

- 2018/5/7子ータより pH12~13 流量20~30m<sup>3</sup> ほぼpH7付近で処理
- その他子ータより pH12まで 流量20~30m<sup>3</sup> ほぼpH7付近で完璧な処理
- 連続でなくバッチ運転でも処理対応

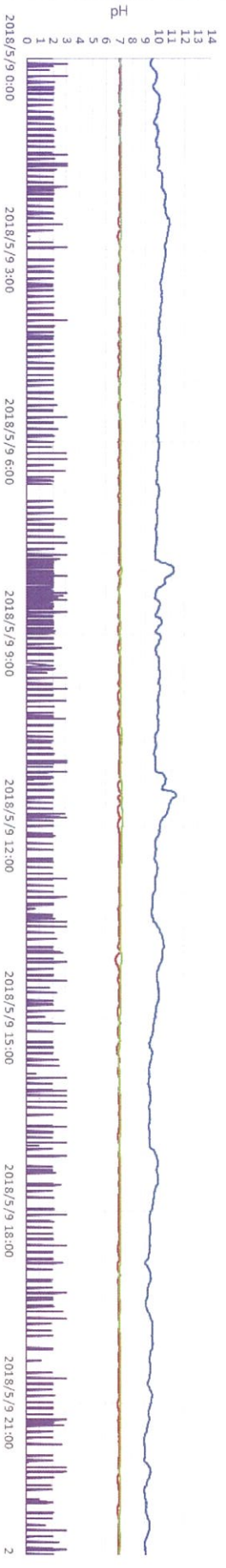
2018/05/07



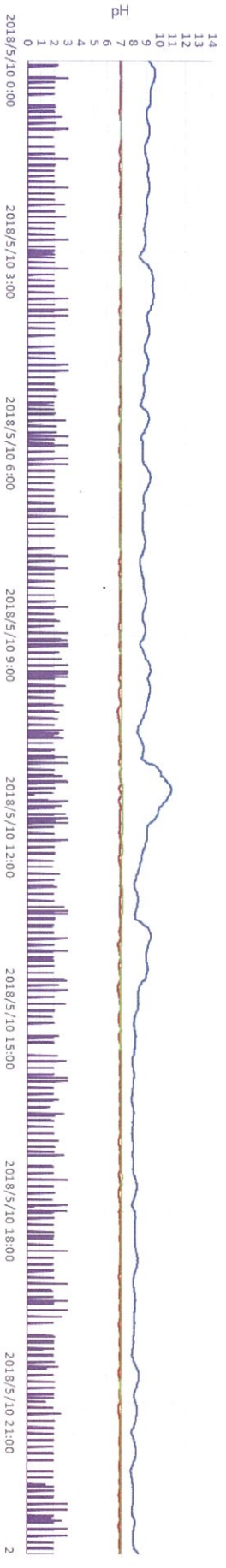
2018/05/08



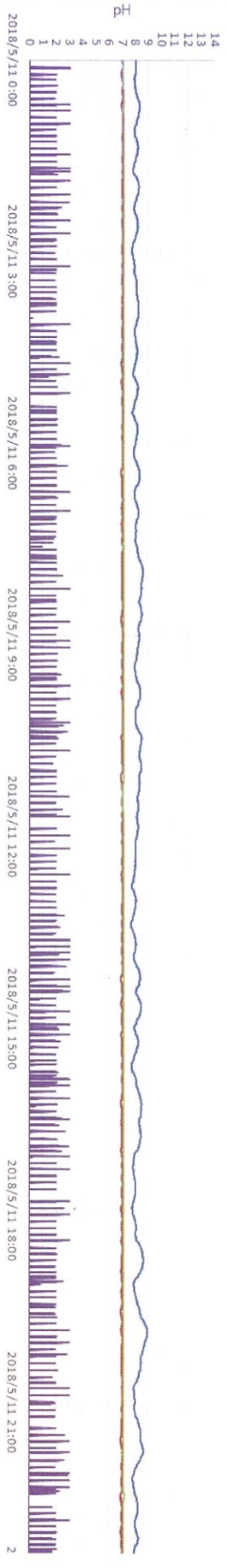
2018/05/09



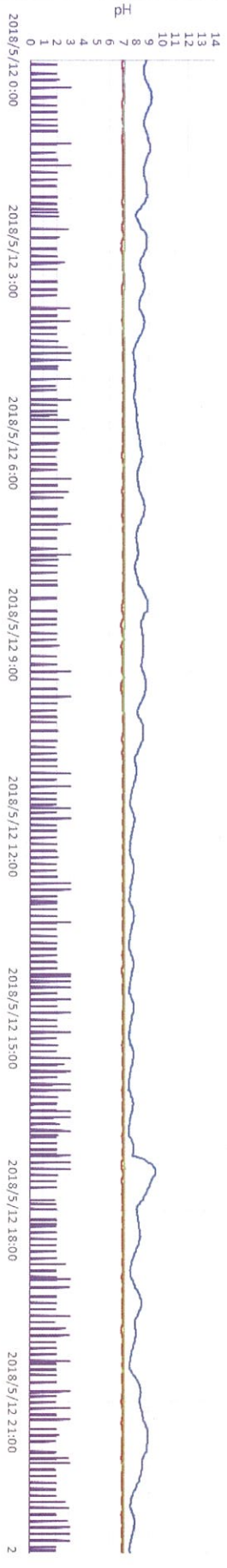
2018/05/10



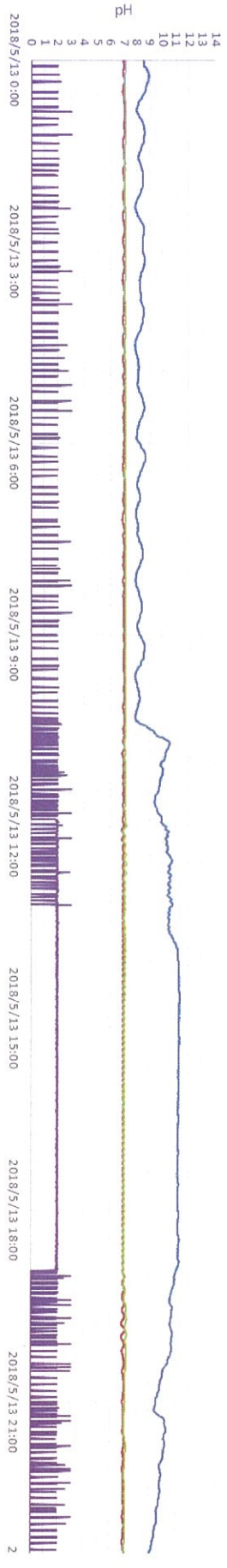
2018/05/11



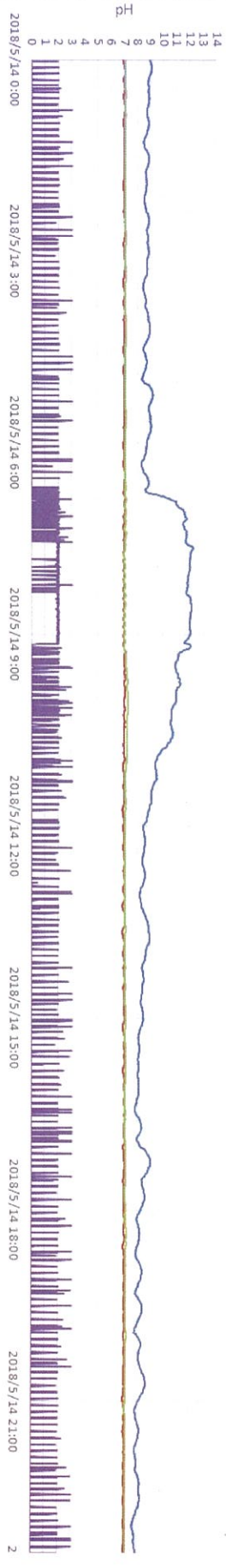
2018/05/12



2018/05/13



2018/05/14



— 原水pH — 中和pH — 放流pH — 原水流量